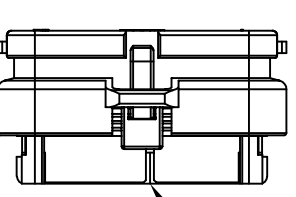
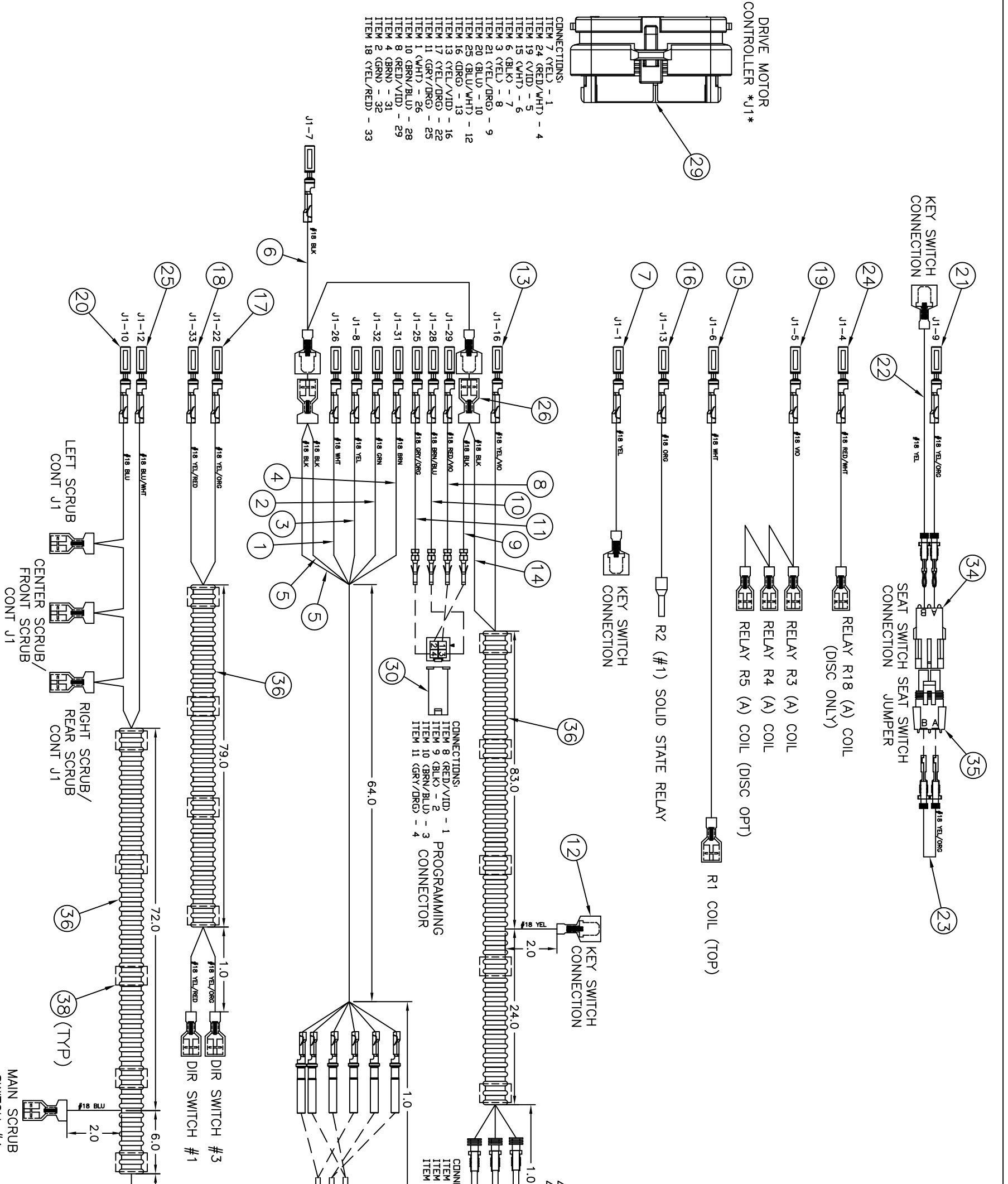


BILL OF MATERIAL			
ITEM	PART NO.	MFG. PART NO.	DESCRIPTION
1	719404-1		WIRE ASSY. WHITE, 18 AWG
2	719404-2		WIRE ASSY. GREEN, 18 AWG
3	719404-3		WIRE ASSY. YELLOW, 18 AWG
4	719404-4		WIRE ASSY. BROWN, 18 AWG
5	719404-5		WIRE ASSY. BLACK, 18 AWG
6	719404-6		WIRE ASSY. YELLOW, 18 AWG
7	719404-7		WIRE ASSY. YELLOW, 18 AWG
8	719404-8		WIRE ASSY. RED/VIOLET, 18 AWG
9	719404-9		WIRE ASSY. BLACK, 18 AWG
10	719404-10		WIRE ASSY. BROWN/BLUE, 18 AWG
11	719404-11		WIRE ASSY. GREY/ORANGE, 18 AWG
12	719404-12		WIRE ASSY. YELLOW/VIOLET, 18 AWG
13	719404-13		WIRE ASSY. YELLOW/VIOLET, 18 AWG
14	719404-14		WIRE ASSY. WHITE, 18 AWG
15	719404-15		WIRE ASSY. ORANGE, 18 AWG
16	719404-16		WIRE ASSY. YELLOW/ORANGE, 18 AWG
17	719404-17		WIRE ASSY. YELLOW/RED, 18 AWG
18	719404-18		WIRE ASSY. YELLOW/RED, 18 AWG
19	719404-19		WIRE ASSY. VIOLET, 18 AWG
20	719404-20		WIRE ASSY. BLUE, 18 AWG
21	719404-21		WIRE ASSY. YELLOW/ORANGE, 18 AWG
22	719404-22		WIRE ASSY. YELLOW, 18 AWG
23	719404-23		WIRE ASSY. YELLOW/ORANGE, 18 AWG
24	719404-24		WIRE ASSY. RED/WHITE, 18 AWG
25	719404-25		DC-FEMALE 10-12G FULL INSULATED
26	741093	AMP 4-520447-2	CONNECTOR 6P DTM PLUG
27	749021	DEUTSCH DTMO6-6S	CONNECTOR 6P DTM
28	749023	DEUTSCH WM-6S	WEDGE LOCK 6P DTM
29	749024	AMP 7/6164-1	CONNECTOR 35 POS PLUG
30	747029	MOLEX 39-01-3049	CONN-MOLEX 4 PIN FEMALE MINI-FIT
31	749041	PACKARD 12162102-B	CONNECTOR 4 POS FEMALE, METRI 150
32	749042	PACKARD 12047948-B	SECONDARY LOCK, METRI 150, 4 POS
33	749043	PACKARD 12059168	SEAL, METRI 150, CAVITY PLUG
34	748021	PACKARD 12010973	CONN-PACKARD, 2 PIN FEMALE
35	748020	PACKARD 12015792	CONN-PACKARD, 2 PIN MALE
36	741231	ELECTRO INSUL CORR- CONWPE250BK/SIT	CONDUIT - SPLIT 1/4" ID
38	000727		TAPE, ELECTRICAL BLACK



DRIVE MOTOR CONTROLLER *J1*



CONNECTIONS:
ITEM 7 (YEL) - 1
ITEM 24 (RED/WHI) - 4
ITEM 19 (VID) - 5
ITEM 15 (VHT) - 6
ITEM 6 (BLK) - 7
ITEM 3 (YEL) - 8
ITEM 21 (YEL/ORG) - 9
ITEM 20 (BLU) - 10
ITEM 23 (BLU/WHI) - 12
ITEM 16 (ORG) - 13
ITEM 13 (YEL/VID) - 16
ITEM 17 (YEL/ORG) - 22
ITEM 11 (GRY/ORG) - 25
ITEM 1 (VHT) - 26
ITEM 10 (BRN/BLU) - 28
ITEM 8 (RED/VID) - 29
ITEM 4 (BRN) - 31
ITEM 2 (GRN) - 32
ITEM 18 (YEL/RED) - 33

NOTE:
ALL DIMENSIONS ARE SHOWN IN INCHES.

WIRE TOLERANCES	
0-1"	± 1/16"
>1" - 12"	± 1/4"
>12"	± 1/2"

THIS DRAWING AND ALL INFORMATION CONTAINED THEREIN ARE THE EXCLUSIVE PROPERTY OF MANITEX. REPRODUCTION OR TRANSMISSION OF ANY INFORMATION CONTAINED HEREIN WITHOUT THE WRITTEN PERMISSION OF MANITEX INTERNATIONAL, INC. IS PROHIBITED. IN ADDITION, THIS DRAWING MUST BE RETURNED UPON REQUEST. FURTHER, ALL INFORMATION CONTAINED HEREIN MUST BE MAINTAINED CONFIDENTIAL.

CONFIDENTIAL
WIRE ASSY, DRIVE MOTOR CONTROL
MATERIAL SEE BOM
FINISH N/A
SCALE NTS

REV	E.C.N.	DATE	CHANGE	BY	CHK
F	151675	03/16/21	REMOVED ITEM #37, 3/6" CONDUIT FROM WIRES 1-5	KHH	KHH
E	151503	10/07/20	LENGTHENED -1 THRU -5 WIRE ASSY (DRIVE MOTOR)	KHH	KHH
D	151394	06/30/20	CHANGED -21 & -22 WIRE ASSY FOR SEAT SWITCH	KHH	KHH
C	151365	06/03/20	CHANGED -19 WIRE ASSY FOR CONNECTION IN DISC MACHINE	KHH	KHH

14846 US ROUTE 20
P.O. BOX 100
PINEVILLE, IL 60140

DATE 06/10/19
CHECKED BY KHH
DRAWN BY KHH
SIZE 1/2" x 1/4" x 3/32"

P.N. 719404
OR

SCALE NTS

REWORK DIMS AND BREAK SHARP EDGES 0005/020